

### A note on our range of fabrics

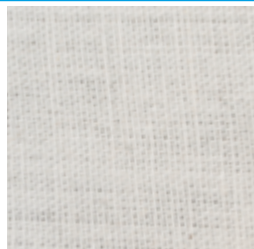
Flints' range of fabrics covers the most popular materials used backstage. There are special prices for the purchase of whole rolls. We have included a page for Made-Up Cloths [page 119]. The following abbreviations are commonly used to denote the fire ratings:

**NDFR** = Non-durably flame retardant; These fabrics will need retreating if they get wet or are washed.

**DFR** = Durably flame retardant; These fabrics will withstand several cleanings.

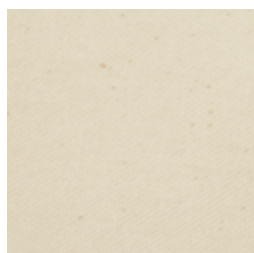
**Not FR** = Not fire retardant; These fabrics have not been treated.

## CANVAS AND CALICO



**Super Scenic Flax 360 g/m<sup>2</sup>** NDFR. Bleached white. This is the standard material for covering open framed timber flats prior to painting. Recommended glues include warm size and Clam 2 or use Sheppy M155 if gluing large areas to plywood. Sold per metre.

Super Scenic Flax 360 g/m <sup>2</sup>	code	Tradeline per m
Width 2.44 m [approx 8']	PR0509	£17.35



**Cotton Scene Canvas 300 g/m<sup>2</sup>** NDFR. Natural colour. A wider but lighter weight canvas ideal for covering plywood. It can be subjected to more wear and abuse than calico could withstand. Recommended glues include Sheppy M155, FlintsBond and Clam 2.

Cotton Scene Canvas 300 g/m <sup>2</sup>	code	per m	per roll approx 50 m
Width 2.66 m [approx 9']	PR0520	£8.95	metre price less 10%



**Calico 190 g/m<sup>2</sup>** NDFR. Natural colour. A good economical lightweight material suitable for covering plywood clad flats. Calico, being rather lightweight, will not disguise poor joins between ply sheets which may need filling [see page 57 for suitable fillers]. If the surface is very poor, cotton canvas

may be a better choice. Recommended glues include FlintsBond, Sheppy M155 and Clam 2.

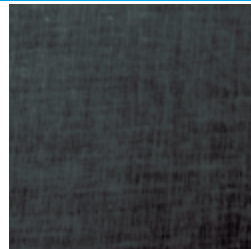
Calico 190 g/m <sup>2</sup>	code	per m	per roll approx 50 m
Width 3 m [approx 10']	PR0540	£7.95	metre price less 10%



**Calico 190-200 g/m<sup>2</sup>** Not FR. Natural colour. As Fire Retardant Calico has become prohibitively expensive, we've decided to offer this NonFR version. Very easy to self-retard, just visit our Flame Retardants page 58.

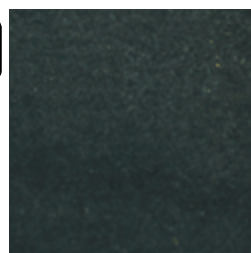
Calico 190 - 200 g/m <sup>2</sup>	code	per m	per roll approx 50 m
Width 2.48 m [approx 8']	PR0550	£4.30	metre price less 10%

## BLACK MATERIALS



**Casement Cotton 125 g/m<sup>2</sup>** NDFR. Black. Lightweight, good value. Its main use is exhibition ceilings but can be attached to lightweight flats with staples and used to hide unsightly messes. If do you need to glue try FlintsBond and Sheppy M155 but beware of bleed through.

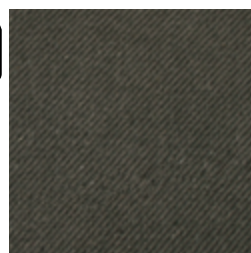
Casement Cotton 125 g/m <sup>2</sup>	code	per m	per roll approx 100 m
Width 1.22 m [approx 4']	PR0530	£2.45	metre price less 10%



**Super Wool Serge 500-525 g/m<sup>2</sup>** DFR. Black. Wool serge provides the best material for masking. This heavyweight fabric is durably fire retardant and has less sheen than velour. Perfect for covering masking legs and borders or for making tabs. Serge is not normally glued to flats but

just folded back on itself and stapled. If glue is needed around profiled edges we recommend Flints Cyclorama Glue used dry with a little PVA or Copydex on the edges. If wing flats are being used to mask lanterns it may be necessary to double cover in Bolton and then serge to avoid light leaks.

Super Wool Serge 500-525 g/m <sup>2</sup>	code	per m	per bolt approx 50 m
Width 1.5 m [approx 5']	PR0508	£10.65	metre price less 10%



**Bolton Twill 265 g/m<sup>2</sup>** NDFR. Black. A more economical masking material than serge. Also useful as a protective black backing to increase the density of serged masking flats which may otherwise bleed light from nearby lamps.

Bolton Twill 265 g/m <sup>2</sup>	code	per m	per roll approx 50 m
Width 1.22 m [approx 4']	PR0500	£4.12	metre price less 10%

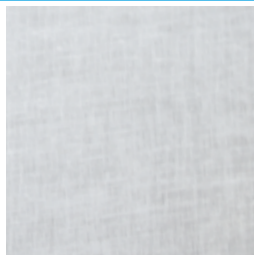


**For Black Car Carpet for your wing spaces, off-stage rostra or get-offs go to page 124**

Turn over for Muslin, Scrims and Hessians!

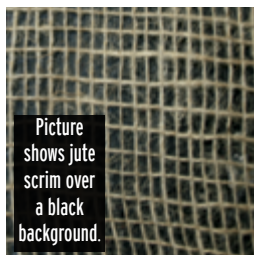
See also Black Fosshape [page 85] and Black Plastazote [page 84]

**SCRIMS AND HESSIAN**



**Muslin 50 g/m<sup>2</sup>** NDFR. White. A very light material typically used for scrimming over polystyrene carvings. Recommended glues include FlintsBond and Sheppy M155.

Muslin 50 g/m <sup>2</sup>	code	per m	per roll approx 100 m
Width 1.22 m [approx 4']	PRO504	£1.59	metre price less 10%



Picture shows jute scrim over a black background.

**Jute Scrim 85 g/m<sup>2</sup>** Not FR. Natural colour. An open weave jute scrim normally used to reinforce plaster waste moulds but could be used to reinforce and add texture to large scale polystyrene carvings. Recommended glues include FlintsBond and Sheppy M155.

Jute Scrim 85 g/m <sup>2</sup>	code	per m	per roll approx 200 m
Width 910 mm [approx 3']	PRO510	£0.45	metre price less 10%

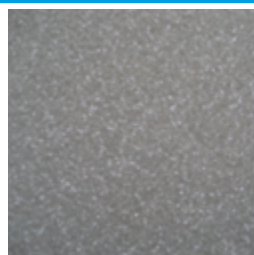


For Hessian bags, see page 82

**Hessian 256 g/m<sup>2</sup>** NDFR. Natural colour. A fire retardant hessian which can be used for its decorative effect or as a tough economical scrim. It is occasionally used as a backing material to protect black serge flats. Recommended glues include FlintsBond and Sheppy M155.

Hessian 256 g/m <sup>2</sup>	code	per m	per roll approx 50 m
Width 1.73 m [approx 5'7"]	PRO501	£4.36	metre price less 10%

**FOAM LINING**



**Foam Lining** 2 mm thick grey foam lining which can be used under display felt and display PVC to provide a super smooth surface. It covers minor discrepancies in ply claddings and it gently rounds off edges.

Foam Lining	code	per m	50+
Width 1.22 m [approx 4']	PRODF06	£2.80	£2.35

**FROST FILM**



**Frost Film [Purfrost]** Self-adhesive clear frosted films for obscuring windows. To apply, wet the adhesive side with soapy water, apply to the window, and squeegee [see page 124 or 340 for squeegees] out any bubbles from the centre outwards.

Purfrost	code	price
2 m x 1 m LxW [in box]	PROPURL21	£19.80
50 m x 1.22 m LxW [in roll]	PROPURL501	£270.90

See also Frost Spray [page 43] and Frost Varnish [page 49].

**EXHIBITION DISPLAY FELT**



Black PRODFS76



White PRODFS68



Yellow PRODFY35



Deep Orange PRODFR01



Red PRODFR07



Trafalgar Blue PRODFB56



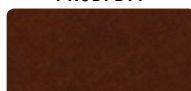
Midnight Blue PRODFB77



Leaf Green PRODFG40



May Green PRODFG38



Brown PRODFN89



**Display Felt 135 g/m<sup>2</sup>** NDFR. Although lightweight, these display felts are actually 1 mm thick. Display felt is flame retardant and so ideal for display and exhibition purposes. It is also a good choice for notice boards. It is not as durable as Serge or Bolton so it is not often used in theatre scenery. Manufactured to comply with BS 476 Part 7 Class 1 and BS 476 Part 6 Class 0 to meet flame retardant standards. 30% wool, 70% synthetic. 1 mm thick. \*Roll lengths vary between 30 m and 57 m. Please phone to check.

Display Felt 135 g/m <sup>2</sup>	code	per m	roll price per m*
Width 1,829 mm [approx 6']	codes above	£10.11	£8.06 x roll length

**SELF-ADHESIVE VINYL**



White Plain PRO101005



Black Plain PRO101000



Red Gloss PRO101325

**Patifix [Fablon replacement]** Patifix is a high quality heavy-duty self-adhesive decorative vinyl made using non-toxic material and a special glue. Patifix is greatly versatile and is ideal for set dressing, covering table tops and display work.

Patifix colour	roll	width	weight	code	price
White	15 m	450 mm	2 kg	PRO101005	£28.80
Black	15 m	450 mm	2 kg	PRO101000	£28.80
Red Gloss	15 m	450 mm	2 kg	PRO101325	£28.80



We no longer stock Display PVC. Why not take a glance at our Designer Products, page 122, for a cost-effective way to change surface appearance?

See also our propmaking materials on pages 84-85.